

NOTHING IS QUICKER TO REINFORCE LAMINATES



FEATURES

- Rapid process (gel time between 1 and 3 minutes)
- Accurate, automatable and high performance technology
- Styrene-free systems for healthier workplaces
- Lightweight, strong, durable solutions
- Densities from 300 to 1500 kg/m³
- Technical assistance along the whole process
- Excellent adhesion to ABS/PMMA laminates

APPLICATIONS

- Reinforcement of thermoplastic laminates for health/hydrotherapy centers, sanitary industry, swimming pools
- Polyesther resin replacement for GRP (marine, composites etc.)

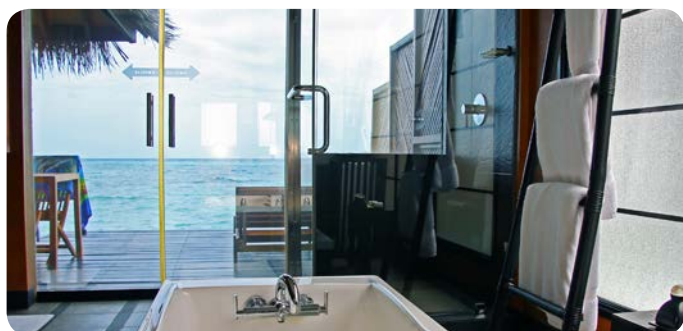
DUNAPOL™ T IS A LINE OF HIGH DENSITY POLYURETHANE LIQUID SYSTEMS TO SPRAY, SPECIFICALLY DESIGNED FOR

Structural reinforcement of thermoplastic laminates

Spray application on thermoplastic laminates allows to quickly build a durable polyurethane hard shell perfectly modeled onto the piece.



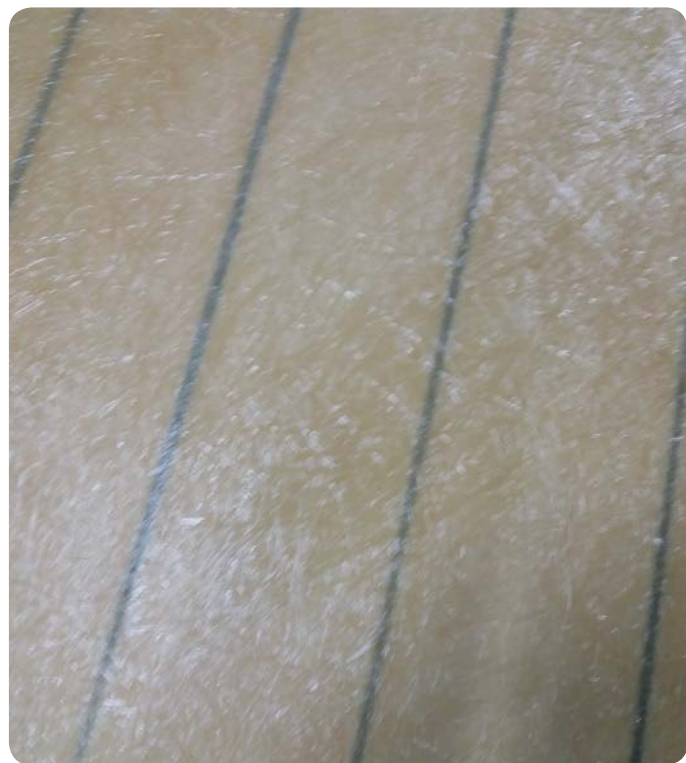
DUNAPOL™ T perfectly works on thermoplastic spa tubs, bath tubs, washbasins, shower trays, swimming ladders and any other laminate structure.



Polyester resin replacement

Solvent- and styrene-free alternative to unsaturated polyester resin for the manufacturing of any kind of glass-reinforced polymers (GRP).

A real game changing product for marine and composites industries (and for their work environments!)



Ask our offices to know more about the most suitable DUNAPOL™ T product for you, we can develop a tailor made solution for every industrial process!



DUNA-CORRADINI SpA

Via Modena Carpi, 388
41019 Soliera,
MODENA, Italy
Tel.: (+39) 059 893911
Fax: (+39) 059 565403

info@dunagroup.com
www.dunagroup.com